



Ice Palace

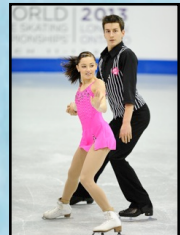
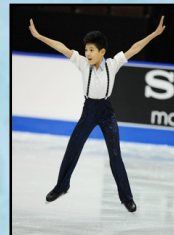
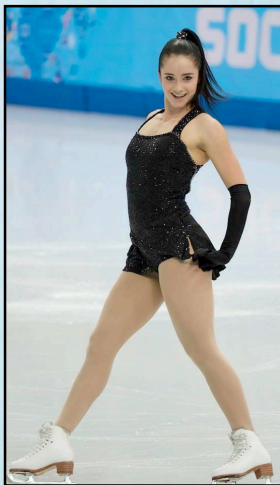
Figure Skating Club



www.icepalace.ca

2015-2016 Skating School

September 1, 2015 – April 23, 2016



The Ice Palace has produced several National and International medalists and is the home of

KAETLYN OSMOND
2-time Canadian Champion
2014 Olympic Silver Medalist

REDUCED PRICES & FREE CLUB JACKET AND TIGHTS FOR ALL HOME CLUB MEMBERS!

- Directed by Ravi Walia, 2013 Skate Canada Coach of the Year
- Jump harness and Dartfish video technology to enhance technique
- Events include Holiday Ice Show, Pizza Party, Club Barbeque, Family Skate, Competition Simulations, Camps, and Fun Days



Ravi Walia
Chartered Professional Coach
Director of Skating
780-944-8021
rwalia@icepalace.ca



Debra Enders
Director of CanSkate
& Member Services
780-444-1943
info@icepalace.ca

Membership

Home Club & Associate Membership	\$75	- September 1, 2015 - August 31, 2016
----------------------------------	------	---------------------------------------

FREE Ice Palace Club jacket and tights!

Home Club Members who register by 6:00pm on August 10 will receive a free club jacket and tights/pants. You must register online, submit your deposit cheques, and submit your Session Request Form prior to the deadline in order to receive your free clothing.

BIG SAVINGS FOR 2015-16!

Packages (includes all on-ice, off-ice, and group classes)

Senior Package	\$270 / month	- Pre-Novice-Senior (must have achieved minimum Sectionals score) - Includes 1.5 hours test dance/skills each week
Intermediate Package	\$240 / month	- Star 5-Juvenile (must achieve successful evaluation of single axel) - Includes 1.5 hours test dance/skills each week
Junior Package	\$190 / month	- Star 1-4
Pair / Dance Package	\$240 / month	- Competitive pair and dance teams - Includes 10 hours of pair/dance ice each week
½ Pair / Dance Package	\$155 / month	- Competitive pair and dance teams - Includes 6 hours of pair/dance ice each week
2 nd Discipline Package	\$100 / month	- Includes all sessions in a different discipline from the primary package (alternative is to pay hourly for 2 nd discipline)

Hourly Bookings

Hourly ice	\$8.00 / hour	- Must purchase the same ice slot each week for the entire season
Group classes (Edges, Stroking, etc)	\$5.00 / 15 minutes	- Includes ice and instruction fees

Deposits (executive members exempt)

Bingo Deposit	3 x \$75 cheques Dated Oct 1, Dec 1, Mar 1	- Cheques will be cashed; your account will be credited after each bingo is worked (\$75/bingo, \$25/late night bingo)
Sunsational Competition Deposit	\$200 cheque Dated April 1	- Each family must volunteer 8 hours at the competition or cheque will be cashed

Additional Information

- Packages include all on-ice and off-ice sessions for the skater's level plus all camps, seminars, and off-season conditioning. Package skaters must attend all on-ice and off-ice sessions each day they skate.
- Registration and payment for packages must be done online. Membership fee will be charged at time of registration. Ice fees can be paid all at once or in monthly installments.
- Associate Members add 20%; additional Family Members deduct 20%.
- The Ice Palace FSC pays for coaches' expenses for selected competitions for Home Club Members.
- The Intermediate Package includes a maximum of 7 freeskate sessions per week. Pre-Novice skaters that have not achieved the minimum Sectionals score and Juv24 skaters may be permitted to skate more for an additional \$8.00/hour; contact Debra with request.
- Visit website regularly for information about schedule changes, camps, bingos, fundraising, spring schedule, etc.
- Refund Policy: Ice credits will be considered for serious medical circumstances substantiated by a medical certificate. A \$50.00 administration fee will be withheld. All other requests for refunds (ie – retired skater, club transfer, etc) will be subject to a cancellation penalty of two months' ice fees. Requests must be received in writing. Bingo and fundraising commitments must still be honored, and cheques will be cashed in the case of non-participation.

Ice Palace FSC – Registration Form (HOURLY BOOKINGS ONLY)

****Hourly skaters submit this form**

****Package skaters register online and do not submit this form**

Name:	Address:	City/Postal:
Parent/Guardian:	Phone (day):	Phone (evening):
E-mail:	Health Care #:	Skate Canada #:
Highest Test Passed:	Birth Date:	Coach:
Membership Fee		
<input type="checkbox"/> Home Club Membership	<input type="checkbox"/> Associate Membership	\$
Hourly Bookings		
Regular sessions: # of hours per week _____ x \$8.00/hour x 31 weeks + Group classes: # of hours per week _____ x \$20.00/hour x 31 weeks **Associate Members add 20% **Additional Family Members deduct 20% from 2 nd child		\$
Payment		
<input type="checkbox"/> Yearly Ice Fee	\$	Divide yearly ice fee into 8 monthly installments and submit post-dated cheques (dated Sept 1–Apr 1)
<input type="checkbox"/> Membership Fee	\$ 75.00	Add to September ice cheque
<input type="checkbox"/> Bingo Deposit	3 x \$75.00	Add \$75 to October, December, and March ice cheques
<input type="checkbox"/> Sunsational Deposit	\$ 200.00	Provide cheque dated April 1
Liability Waiver and Release		
I agree that the Ice Palace Figure Skating Club and/or its directors and coaches will not be held responsible for any accident or loss, however caused, and for any damages which may arise from such accident or loss. Further, I agree to abide by the Rules and Regulations of Skate Canada and the Ice Palace Figure Skating Club as set down by the Board of Directors. I give permission for the Ice Palace Figure Skating Club to publish the registrant's name, club information, and/or photo in club publications, newsletters, advertisements, and website. I understand that there shall be no refunds in the event that skating sessions are cancelled due to mechanical failure, tests, or other club activities. I accept full financial responsibility for this application form and agree to the Ice Palace FSC refund policy. <u>Refund Policy:</u> Ice credits will be considered for serious medical circumstances substantiated by a medical certificate. A \$50.00 administration fee will be withheld. All other requests for refunds (ie – retired skater, club transfer, etc) will be subject to a cancellation penalty of two months' ice fees. Requests must be received in writing. Bingo and fundraising commitments must still be honored, and cheques will be cashed in the case of non-participation.		
Athlete Signature (Parent/Guardian if under 18):		Date:

Drop off at the Ice Palace mail slot or mail to: Box 63007 West Edmonton Mall Post Office; Edmonton, Alberta; T5T 5X1

Home Club Members who submit registration, session request form, and deposit cheques prior to the deadline will receive a free club jacket and tights!

Member Deadline: 6:00pm on August 10, 2015

