



*"You miss 100% of the
shots you don't take"*
- Wayne Gretzky -

Welcome, Amanda!

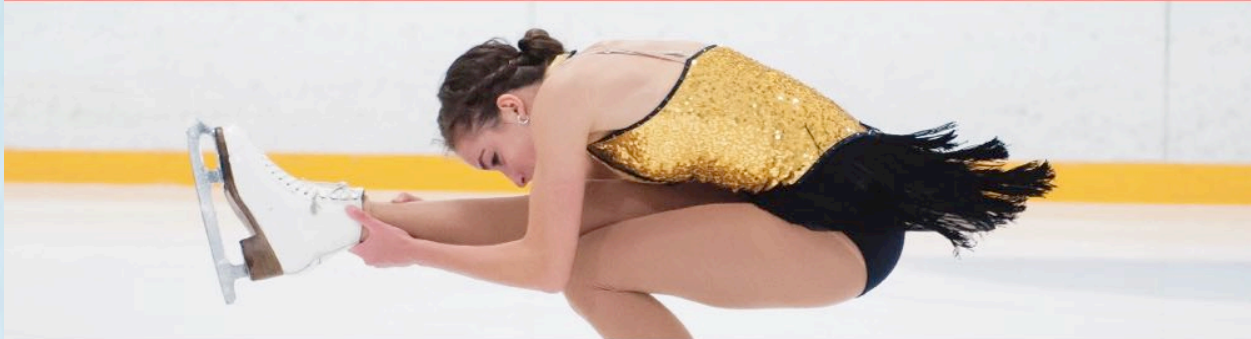
The Ice Palace is excited to announce that Amanda Pess has been hired as our new Office Manager. Amanda will begin on July 11th and will work closely with our Skating Director, CanSkate Coordinator, coaching team, and club membership. Amanda skated at the Ice Palace for 10 years and has spent 6 years as the Senior Sales Manager for Regency Developments. She is an enthusiastic, hard-working, and dedicated professional and will be a great addition to the Ice Palace team!

Annual General Meeting

The AGM has been moved to Tuesday, July 19 at 5:45pm. Details and a list of candidates for election is posted on our website. All members are encouraged to attend!

2016-17 Skating School

- Skating School information will be posted on our website soon. Package skaters who submit their registration, deposit cheques, and Session Request Form by 6:00pm on August 5 will automatically be registered to skate in our Pre-Season Camp for no charge. All other package skaters pay \$100 to skate in the Camp.
- The Skating School now runs until the end of June and includes Bootbreakers.
- Packages are calculated at a discounted rate and include all camps, seminars, off-season conditioning, and group classes (edges, stroking, etc). Package skaters must attend all on-ice and off-ice sessions each day they skate.
- Refund Policy: Ice credits will be considered for serious medical circumstances substantiated by a medical certificate. A \$50.00 administration fee will be withheld. All other requests for refunds (ie – retired skater, club transfer, etc) will be subject to a cancellation penalty of two months' ice fees. Requests must be received in writing. Bingo and fundraising commitments must still be honored, and cheques will be cashed in the case of non-participation.



The LCF Sole features the superior shock absorption properties of leather.

- LCF Soles are standard on all 5000 Series boots
- Reduced weight
- Moisture resistant
- Rubber layer provides non-slip blade mount and improved shock absorption

Available by special order on Elite 4500 & 4200, Men's Supreme and DJ2800 Premiere. Completion time is approximately 2 weeks.



We have over 50 years' experience in skate fitting, sharpening, blade mounting, and repair. We serve beginner to Olympic skaters.

Check out our online store for our full selection of skates!



ADDRESS 7620 Gateway Blvd. N.W., | PHONE 780.433.1181 Toll Free 1.800.361.8776
HOURS Mon+Tues: 9:30 - 6, Wed-Fri: 9:30 - 9, Sat: 9 - 5:30, Sun: 11 - 5:30 | WEB unitedcycle.com

