

2022

2023



# ICEPALACE

FIGURE SKATING CLUB

## SKATING SCHOOL

SEPTEMBER 1, 2022 – JUNE 30, 2023



HOME OF NATIONAL AND INTERNATIONAL CHAMPIONS



**DIRECTED BY RAVI WALIA**  
OLYMPIC & WORLD COACH  
SKATE CANADA COACH OF THE YEAR



**LESSONS WITH KAETLYN**  
LEARN FROM A CHAMPION TO  
ELEVATE YOUR SKILLS & MINDSET



**INTERNATIONAL LEVEL**  
COACHES HELP YOU REACH  
YOUR FULL POTENTIAL

**REGISTRATION DEADLINE: AUGUST 5**

780-444-1943  
[info@icepalace.ca](mailto:info@icepalace.ca)



# ICEPALACE

FIGURE SKATING CLUB

icepalace.ca



## COACHING TEAM

The Ice Palace FSC has a highly qualified team of professional coaches who work together to ensure that each skater achieves personal excellence. Please visit our website for more information about our exceptional coaches.



**Ravi Walia, ChPC, BAdmin**  
Olympic & World Coach  
2-time Skate Canada Coach of the Year  
ISU Level Technical Specialist



**Lynne Koper**  
NCCP Level 5 Certification  
Competitive Dance & Edge Specialist  
Over 30 years coaching experience



**Jessica Gosse**  
NCCP National Coach Certification  
Coach of National Medalists  
27 years coaching experience



**Shirley Solkowski, BEd**  
NCCP National Coach Certification  
Competitive Dance & Edge Specialist  
36 years coaching experience



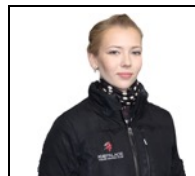
**Antoinette Hempel-Bakker**  
NCCP National Coach Certification  
Professional skater with Disney on Ice  
10 years coaching experience



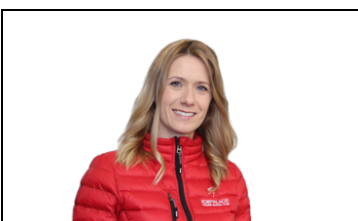
**Sylvie Wandzura, BPhEd**  
NCCP Level 5 Certification  
Coach of National Medalists  
32 years coaching experience



**Ekaterina Gordeeva**  
NCCP Provincial Coach Trained  
2-time Olympic Champion  
17 years coaching experience



**Christina Penkov**  
NCCP Provincial Coach Trained  
5-time National Ice Dance Competitor  
9 years coaching experience



Questions about our Skating School?  
**Amanda Pess, Office Manager**  
**info@icepalace.ca**  
**780.444.1943**



MEMBERSHIP	
Annual Membership September 1, 2022 - August 31, 2023	\$ 85

OPTION 1: PACKAGES	
Junior Package	\$ 220 / month
Intermediate Package	\$ 280 / month
Senior Package	\$ 335 / month
OPTION 2: HOURLY BOOKINGS	
Regular sessions	\$12 / hour
Edge / Stroking classes Includes ice and instruction fees	\$6 / 15 mins

- Packages include all on-ice sessions, off-ice classes, camps, seminars, and group classes (Edge Class, Stroking, Jump Drills, etc.). Int & Sr packages also include 30 mins of Test Dance/Skills per week.
- Hourly bookings – contact the office to book your sessions (must be the same slot for the entire season). Priority is given to package skaters.
- Pair/Dance teams – contact the office to arrange a customized package
- Additional family members receive 25% discount



VOLUNTEER COMMITMENTS	
Bingos	A \$125 charge will be applied to your account on Oct 1, Jan 1, and Apr 1. Each deposit will be returned to you when you work each of your three bingos. See website for details.
Fundraiser	Each family must participate or a \$150 charge will be applied to their account. Details TBA.
Sunsational Competition	Each family must volunteer 8 hours at the event or a \$250 charge will be applied to their account.

- Executive Members are exempt from volunteer commitments
- Hourly Booking skaters are exempt from Bingos but must complete all other volunteer commitments

SESSION LEVELS	
Senior A	Pre-Novice – Senior
Senior B	Pre-Novice
Intermediate A	Pre-Juvenile – Juvenile
Intermediate B	STAR 5 – Juvenile
Junior	STAR 1-4
Pair / Dance	Dance & Pair Teams Plus Test Dance, Skills, and Adults with approval of Dance Coordinator

- The above requirements are guidelines only. All session assignments will be made by the Skating Director and are based on skill level, competition scores, and membership situation.
- Elite sessions are for skaters landing multiple triple jumps and who have been invited by the Skating Director.
- Senior skaters will be placed on two freeskate sessions per day. Priority for additional sessions will go to Elite skaters.



## ADDITIONAL INFORMATION

- Our Skating School runs from September 1 until June 30 and includes a different schedule for May/June. Note that we have breaks throughout the year (including a 3-week break in the spring) and that all breaks and schedule changes have been considered when calculating monthly fees.
- Visit our website regularly for Calendar of Events, schedule changes, and other important information.
- In order to receive our discounted package rate, skaters must attend all off-ice sessions each day they skate. Skaters missing off-ice classes without permission will not be permitted to skate.
- Please note that there may be limits to your number of sessions per week. We will contact you if any adjustments to your schedule are needed.
- No make-up sessions are offered due to absences. Hourly skaters whose regular ice time has been cancelled may make up for their cancelled session by requesting a different session in the same week.
- In order to ensure a positive and successful skating experience, please adhere to our Club Guidelines and the Parent Code of Conduct posted on our website.
- The Ice Palace FSC pays for coaches' expenses (travel, accommodation, etc.) for Home Club Members for select competitions, including all qualifying events. The list of competitions will be communicated via email.
- Registration deadline is August 5<sup>th</sup>. Package skaters who do not submit their registration prior to the deadline will have a \$75 late fee applied to their account.
- *Refund Policy: refunds will be considered for serious medical circumstances substantiated by a medical certificate. A \$50.00 administration fee will be withheld. All other requests for refunds (ie – retired skater, club transfer, etc.) will be subject to a cancellation penalty of two months' ice fees. Requests must be received in writing. Bingo and fundraising commitments must still be honored, and volunteer commitment charges will be applied in the case of non-participation. There shall be no refunds in the event that skating sessions are cancelled due to mechanical failure or club activities.*

